



LED HYPERBARIC CHAMBER LIGHT

Model: CLL-01



MODEL INFO

This compact hyperbaric chamber light shall be easily mounted within any hyperbaric chamber up to 300msw (31.4bar). A transparent thermoplastic resin envelop protects the LED module by pressure and it avoids any possible spark. The anodized aluminum body provide excellent thermal management in a light weighted body.

The light engine consist of a integrated PCB with high power LEDs, that provides customers with high reliability and flexibility to produce always the optimal light.

Each unit is cost effective, with an estimated cycle life time of 3 years with LEDs module manufacturer warranty.

TECHNICAL DATA

Physical

Body diameter:	80mm (3.15in)
Body height:	35mm (1.38in)
Cable lenght:	as required

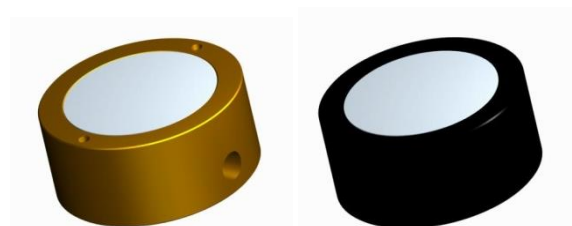
Electrical

Nominal voltage (Vdc):	27
Nominal power (W):	9.5
Forward voltage (Vdc): @350mA	22.9 ÷ 35.9
Power consumption (W): @350mA	8.0 ÷ 12.6

Environmental

Temperature (°C):	-10 ÷ +50
-------------------	-----------

Color options



Res Marina s.r.l.

Via del Trabaccolo, 18 - 48122 Ravenna (RA) – Italy
tel. +39 0544 201438 – fax +39 0544 531015

resmarina@resmarina.com - www.resmarina.com

C.F./P.IVA/Reg. Impr. RA 02356960399 – REA n. RA 194673

